

VOLUME 26, ISSUE 2

SH'VAT 5785

FEBRUARY 2025

B'NAI ISRAEL BULLETIN



B'NAI ISRAEL REFORM TEMPLE

67 OAKDALE BOHEMIA ROAD
OAKDALE, NY 11769
(631) 563-1660

TU BISHVAT

NEW YEAR OF THE TREES
JEWISH ARBOR DAY

WWW.BNAI-ISRAEL.ORG

Rabbi Rosenthal's Message

When I was young, there was a ritual beloved to many children known as Saturday morning cartoons. Amidst the beloved cartoons that I loved to watch, there was a series of animated musical educational shorts called Schoolhouse Rock! One of the little shorts that still resonates with me goes like this, "As your body grows bigger, your mind must flower, It's great to learn, 'Cause knowledge is power!"



It's been playing through my mind lately because I have been in the midst of creating an intro to Shabbat document that explains some of our customs, Synagogue symbols, prayers, and a little of the meaning behind them. While originally intended for guests, non-Jews, or new to Judaism participants, I think that it is really for anyone who would like to know a little more.

It can be easy to recite our prayers without thinking about the meaning, and how we connect or don't connect to them. When we stand up or sit down and proclaim the shema, what are we thinking about? Who is God/what is the sense of holiness we imagine? When we say "blessed is God's majesty" what do we mean? Do we mean that God is a ruler over us? Do we think of it more metaphorically, perhaps as in Oneness where we find holiness? Or is there something completely different running through our minds? Perhaps we just try and find relaxation or peace. Whatever we consider, having a little knowledge at our side can be powerful, and perhaps inspire us to connect more personally, and more deeply.

While I can't list every custom, tradition, and explanation in the document, I can list several key themes. As it stands, it's already six pages long. But it's a good start. Once it's printed, I encourage you to skim through. Maybe there is an explanation you have never considered, or perhaps you'll be reminded of a ritual movement or symbol and its meaning.

My hope is to continue to find new, different, and creative ways to communicate and engage with Jewish knowledge. May it empower us all to find greater meaning this month and beyond.

Torah & Haftarah Readings

February 1st: Exodus ch. 10 vs. 1 through ch. 13 vs. 16
Jeremiah ch. 46 vss. 13 through 28

February 8th: Exodus ch. 13 vs. 17 through ch. 17 vs. 16
Judges ch. 4 vs. 4 through ch. 5 vs. 31

February 15th: Exodus ch. 18 vs. 1 through ch. 20 vs. 23
Isaiah ch. 6 vs. 1 through ch. 7 vs. 6; ch. 9 vss. 5 through 6

February 22nd: Exodus ch. 21 vs. 1 through ch. 24 vs. 18
Jeremiah ch. 34 vss. 8 through 22; ch. 33 vss. 25 through 26



2025

Torah Study & Adult Education

CLASS SCHEDULE

10:00 am Torah Study

11:00 am Adult Education

February 1 and 8

March 1

April 26

May 10

Up To

Off



Schedule is subject to change. Please watch the weekly email, bulletin, and online calendar for updates.

CONTACT

Rabbi Jessica Rosenthal

631-563-1660

rabbi@bnai-israel.org

www.bnai-israel.org

67 Oakdale Bohemia Rd
Oakdale, NY 11769

President's Message

As must know during Kol Nidre we had a false alarm occur with the fire system. This became an unexpected fire drill that pointed out that we needed to update how we handle such a situation. An evacuation plan has been crafted and put into place. The plan works better if all know what the plan is! A copy of the plan can be found on the next page of this bulletin and will be published on our website. Please take some time to familiarize yourself with it.



You might have already heard that we are actively collecting funds to be sent to the Pacific Palisades Synagogue in California to aid with recovery from the devastating wild fires that have plagued the area. The reform movement has long proclaimed the importance of Tikun Olam, healing of the world. If you can spare a little bit to help it would be greatly appreciated.

Finally our Sonkin's Sensational Lottery Raffle is back for the 5th year. For a minimum donation of \$5 you can win prizes based off of the New York Evening Daily Numbers in the month of April. Please see the flyer in this edition of the bulletin for more information.

l'Shalom,
Seth C. Berman

Outreach Committee - Alice Lambert

LA California Fire Relief

We are all feeling devastated and helpless by the destruction and deaths caused by the horrific wildfires in Los Angeles, California.

As part of the human community, and the Jewish community, it is incumbent upon us to try to help in whatever way we can. To that end, we are asking for donations for the Pacific Palisades Synagogue, which is the only Synagogue to remain standing and unharmed. The Rabbis, whose homes were all destroyed, have opened the doors of the house of worship to the entire community to be a safe haven of comfort.

One resident said that "the resilience of the synagogue gave her reason to believe the Jewish community would help lead the town's reconstitution." Donations are being requested so they can provide for the needs of the community, regardless of religion. They have set up a fund for its displaced community members. One of the Rabbis said, "That's the home we have left for many of us, and the one we'll create together as a community."

There are many other organizations to which donations can be sent. Among these is the World Central Kitchen (WCK) which is providing meals for the emergency workers and people in the community.

We are hoping that everyone will dig as deeply as they can to make a generous donation. You can go to the B'nai Israel website and donate online, or you can send a check, made out to B'nai Israel, directly to the Temple. Cash is fine also.

Thank you, in advance, for your generosity in helping the people affected by the catastrophic LA fires.

Shalom,

Alice Lambert

Congregation Evacuation Plan

Consultations with fire and police officials have led us to develop evacuation procedures for everyone's safety in potentially hazardous situations. Your cooperation with Temple Leadership and Security Volunteers is important and appreciated.

1. When to Evacuate?

If audible alarm sounds – regardless of cause:

- **During a service**, the person at the Bema will direct everyone to “leave the building immediately from the nearest exit, taking only possessions within your immediate reach.” If it becomes apparent that one or more exits are no longer safe, you will be directed to other nearby exits. Once outside, a Security Volunteer will lead you to a predetermined safe area.
- **At meetings or social occasions**, Temple Leadership or a Security Volunteer will make a similar announcement and direct your evacuation.

If NO audible alarm:

- At ANY event, if evacuation is necessary (e.g., receipt of a threat, advice of the SCPD, detection of smoke or an actual fire), Temple Leadership or a Security Volunteer will make a similar announcement and direct your evacuation.

2. How to Evacuate:

Detailed evacuation procedures are specified in a separate document for Security Volunteers. Everyone must follow their instructions and leave the building as quickly as possible, regardless of weather conditions. The Volunteers will direct you to a safe area away from the Temple building, but no further than necessary. It is essential for everyone's safety that you do not return to your car and Volunteers will enforce this rule.

Security professionals strongly recommend that people requiring extra time to evacuate (e.g., those with canes or walkers) be seated near an exit and be accompanied by helpers who can assist.

Once out of the building, no one is permitted to reenter until an “all clear” is given by the responding emergency personnel. Return to the building will be through the front door only.

Please cooperate with Security Volunteers and be patient.



**HELP DONATE TO THOSE IN HUNGER!
ACCEPTING NUTRITIOUS AND
NON-PERISHABLE ITEMS**

ALL YEAR

B'NAI ISRAEL REFORM TEMPLE
67 OAKDLE BOHEMIA RD
OAKDALE, NY 11769

PLEASE CONTINUE TO BRING YOUR DONATIONS TO THE TEMPLE.

THANK YOU IN ADVANCE FOR YOUR GENEROSITY

SONKIN'S

sensational

LOTTERY RAFFLE

5TH ANNUAL

If your raffle ticket number matches the evening New York State 3-digit drawing you win the prize shown on the calendar below on that date.

Donation: \$5.00 per ticket

To purchase tickets

please either contact the Temple Office
or **visit bnai-israel.org to purchase online**

Deadline to purchase is March 31

April 2025 Prize Calendar						
SUN	MON	TUE	WED	THU	FRI	SAT
		1 \$100	2 \$25	3 \$50	4 \$75	5 \$25
6 \$50	7 \$25	8 \$50	9 \$25	10 \$50	11 \$100	12 \$25
13 \$50	14 \$25	15 \$100	16 \$75	17 \$50	18 \$25	19 \$50
20 \$50	21 \$25	22 \$25	23 \$50	24 \$25	25 \$50	26 \$25
27 \$50	28 \$25	29 \$25	30 \$250			



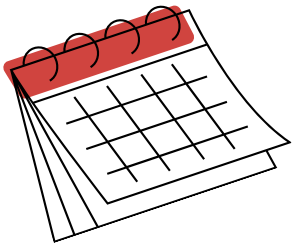
THANK YOU TO ALL THE FAMILIES THAT JOINED US FOR FAMILY SHABBAT SERVICE ON JANUARY 10TH! LOOKING FORWARD TO THE NEXT FAMILY SERVICE ON FEBRUARY 14TH



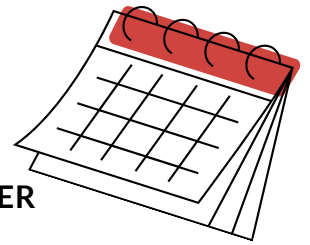
IMPORTANT DATES IN FEBRUARY

- FEBRUARY 14TH: FAMILY SHABBAT SERVICES 7:15--
ALL STUDENTS CAN/WILL PARTICIPATE**
- FEBRUARY 21: KID-ISH SHABBAT 7:00 PM**
- FEBRUARY 17TH--NO RELIGIOUS SCHOOL**
- FEBRUARY 22ND--NO RELIGIOUS SCHOOL**

UPCOMING EVENTS--MARK YOUR CALENDAR



- MARCH 1: FAMILY FUN BINGO NIGHT**
- MARCH 14: FAMILY SHABBAT SERVICES**
- MARCH 15: PURIM CARNIVAL**
- MARCH 21: KID-ISH SHABBAT**
- MARCH 29: RELIGIOUS SCHOOL PASSOVER SEDER**



OUTREACH IS AN IMPORTANT PART OF OUR SCHOOL'S VALUES. HELPING PEOPLE IN OUR COMMUNITY IS SO IMPORTANT. PLEASE CONTINUE TO BRING IN TZEDAKAH AND FOOD FOR OUTREACH!



The Library is OPEN!!
Thank you to Sarah Vezina for reorganizing and making our library easy for all to use! we encourage you and your children to borrow books!

PARENTS--IMPORTANT



Please check your email regularly for announcements of upcoming events and any missed assignments as this is our primary method of communication. In case of emergency school closings or delayed openings announcements will be made by email.

(If we do not have your current email address and you have not been receiving correspondences, please email us at school@bnai-israel.org with your current email address.)



Membership Matters

The Membership Committee meets monthly, focusing on ways to build relationships among temple members by planning activities and exploring ideas for increasing temple membership. We continue to support Special Interest Groups which encourage members to share their common interests. We welcome new committee members and ideas. **Our next two meetings are scheduled for February 11th and March 11th at 7 pm.**

Current Groups and their contacts

Snowbirds

It was fun to have our Snowbirds join us virtually for our Shabbat service on January 3rd. They plan to meet for dinner and join us virtually the first Friday of every month through April. Call Barbie Saslau at 631-553-5723 for details.

Couples Connections

Email Rich Motlin at: richard.motlin@gmail.com for information about activities for meeting with other couples.

Interfaith Group

This group has met several times and is planning on further activities for meeting and sharing experiences. Email Ellie Smith at esmith11@sjny.edu or call her at 631-806-3737 for more information. The group welcomes those in interfaith relationships, those who have family or friends in interfaith relationships and those who have converted.

Leisurely Singles

The Leisurely Singles group welcomes new members. Anyone who is single and Jewish and would like to join our group is welcome. Call Barbara Abrams at 631-224-1445 or email at jbabrams@optonline.net.

We were busy in December with a Hanukkah lunch and a Sunday meal at Aegean Cafe in January.

On February 6 at 1 PM, Rabbi Rosenthal will lead us in a discussion group and we will be eating bagels and lox. We will be meeting at Marlene Goldstein's house. Please give her a call at 631-589-6810 if you would like to join us.

On March 16 at 1PM, we will have a book discussion of "The Garden Keeper of Auschwitz's " at Ann Michelson's home. We will be enjoying a pizza lunch. Please contact Ann at ann.michelson@yahoo.com.

As you can see we like to do a variety of activities and we usually add a meal, too. Please give our group a try. New members and ideas are welcome.

If you have any general questions about membership or ideas for forming a new special interest group, please let us know: membership@bnai-israel.org

Roots of Connection: A Spring Planting Celebration

ALL AGES WELCOME!

**Join us on March
30th from 10:00 AM
to 12:00 PM to plant
floral and herb
seedlings for our
garden or yours!**



*Planting supplies will be provided
and a Bagel Brunch with all the
fixings will be served. Check our
March Bulletin for additional
information.*

PLEASE RSVP
by March 14th to Karen
via email @
office@bnai-israel.org
or telephone
@ (631) 563-1660



B'nai Israel invites you to the people's:

Purim Masquerade



*Dinner, a Purim Game show
and Dancing!*



March 8th, 2025

At B'nai Israel, 6:00 pm

\$20 per person, Adults only

Heroes, side salads, dessert, BYOB

Rsvp to Karen at office@bnai-israel.org

by February 27th, 2025

Mazel TOV

To Elyse Holts on the
birth of her first
Grandchild, Lenea



Do you shop at Stop & Shop?

If Yes, you can purchase Stop & Shop Gift Cards from the Temple and the we get a percentage back as a donation!

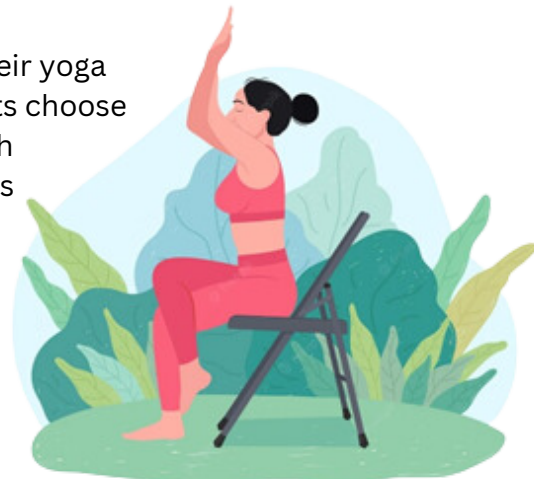
They can be purchased through our website or see Rich Lindner on Friday evenings or call (516) 641-8050 or the Temple Office.

Consider donating these gift cards to the Temple's Outreach Committee to help others in our community who are in need of some assistance.

Dynamic Chair Yoga **with Bonnie Rubell**

Dynamic Chair Yoga is an intermediate level yoga class held at our Temple every Thursday morning at 10:30 am.

This is an active yoga class for fit seniors who want to start or continue their yoga practices. This class presents modifications for many yoga poses. Students choose the modifications which work best for them. This is a Hatha chair approach aimed at building body strength for balance and flexibility for life activities such as walking, hiking, travel, dog walking, kayaking and more. Special therapeutic exercises on the Yoga mat will address typical age-related physical changes and conditions. Senior Yoga is strengthening, therapeutic and protective for body and mind. It's also social and fun. This class is also appropriate for all ages who want to get back to an exercise program after a long break.





Join us on Friday, February 14th, 7:15 pm for Scout Shabbat

Our annual Scout Shabbat will be celebrated this year at a Family Service on February 14th. We will recognize and honor youngsters and adults who participate in the Suffolk County Scouting program. All branches of Scouting will be honored. Uniforms will be appropriate for the occasion. Scouts do not have to be members of B'nai Israel to participate and all are welcome.

A representative of the Suffolk County Jewish Committee on Scouting will join us that evening. Scouts and their leaders will receive a blessing from Rabbi Rosenthal and everyone present in uniform will receive a patch to represent their participation in this special service.

As always, parents, family and friends of our Scouts are invited to join us and encouraged to attend.



MILITARY APRIL 05
Save the Date

BRIDGE

dinner ~ cards ~ dessert * details to follow



SISTERHOOD

**FEB
2024**



We hope you have enjoyed and found meaning in the programs that Sisterhood has provided so far this year! Your involvement is crucial to our success, and there are many opportunities to get engaged and support our events and philanthropy initiatives.

We are excited to extend an invitation to you! Join us for a time filled with impactful programming, joyful camaraderie, and dedicated service to B'nai Israel and our community.

Together, let us embrace and celebrate our Jewish faith in a spirit of unity and joy.

Feb 18 at 7pm Wine & Cheese Movie Night

Ester Steinberg: Burning Bush
"Jewish Mom Ester Steinberg's Comedy Special Is Real, Raunchy, and So, So Good"
--Kveller

BRING YOUR OWN WINE/BEVERAGE

Mar 25 WOMEN'S SEDER

Peace, Love and Light -
A Celebration of Hope

details to follow

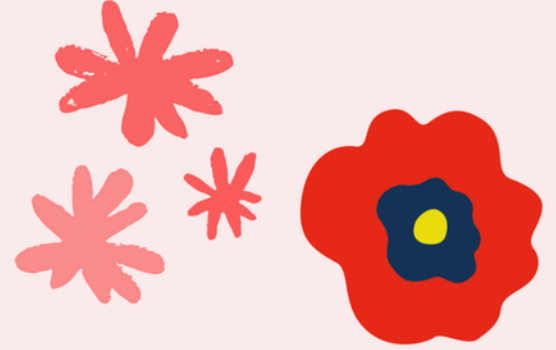
**Road Trip!
Save the date**

**Women of Reform Judaism WRJ
Northeast District Retreat
+ March 15-16, Berkshires, MA+**

**Contact Joi or
Natalie for
details**

PERIOD POVERTY

THE FACTS. PERIOD.



Period Poverty is the inability to access menstrual period products.

In the US, 1 in 4 teens and 1 in 3 adults struggle to afford period products.

1 in 3 low-income women report missing work or school due to lack of access to period supplies.

HELP US PUT AN END TO PERIOD POVERTY!

PLEASE SUPPORT OUR PERIOD SUPPLY DRIVE
starting MARCH 2025



We will be accepting the following items for the Allied Foundation in Melville:

Heavy Maxi Pads, Heavy Maxi Pads with wings, Panty Liners,
Period Underwear (sizes XL and 2XL) and Heating Pads



Sisterhood presents a

WOMEN'S SEDER



PEACE, LOVE & LIGHT - A CELEBRATION OF HOPE

- *March 25, 2025
6:00 pm
Appetizers & Schmooze
6:30 pm
Seder*
- *A night of tradition
with old & new rituals*
- *Join us in story, song &
prayer*
- *\$20 Sisterhood
members
\$25 Non-members*
- *RSVP by March 17
on temple website use
the Sisterhood
payment page
SPECIAL EVENT ticket*

Open seating/No refunds
For more info contact Joi Garvin
@ 516-313-6988

*Please support our fight against Period
Poverty with a donation from this list:
Heavy Maxi Pads, Heavy Maxi Pads with
wings, Panty Liners, Heating Pads &
Period Underwear (sizes XL and 2XL)*

Donations & Contributions

We gratefully acknowledge the following donors for their contributions to B'nai Israel Reform Temple:

Ethan William Snair Memorial Fund

Gammie - In loving memory of my beloved grandson Ethan William Snair

Roberta Snair Saraceni - In loving memory of my beloved grandson Ethan William Snair

Help-A-Family Fund

Rochelle & Gerald Slochevsky

Ann & Zion Armoza - In memory of Avram Armoza

General Fund

Sandy & Paul Weber - In memory of Bradley Miller

Sandy & Paul Weber - In memory of Myles Fink

Alice & Mike Lambert - In memory of Avram Armoza

Linda Monaco - In memory of Arlene Davidowitz

Linda Monaco - In honor of the birth of Elyse Holts' granddaughter

Alice & Mike Lambert - In memory of Arlene Davidowitz

Ira Rosenfeld Memorial Scholarship Fund

Fran Leiboff - In memory of Leah Persoff for her yahrzeit

Angela Rosenfeld - In memory of Bradley Miller

Religious School Fund

Sandy & Paul Weber - In memory of Eileen Goldberg

Alice & Mike Lambert - In memory of Kenneth Kersch

Outreach

Suzanne & Mark Wittenberg

Building Fund

Fran Leiboff - In memory of Leon Leiboff

Yahrzeit Fund

Joel Silverman - In memory of Florence Silverman

Joel Silverman - In memory of Karen Levine

Eve & Steve Taitz - In memory of Phyllis Taitz

Ellen & Charles Fishman - In memory of Herbert Haselkorn

Arthur & Linda Rosen - In memory of Louis Rosen

David Roth - In memory of Robert Roth

David Roth - In memory of Al Roth

Laurie & Cliff Aronson - In memory of Naomi Aronson

Prayerbook

Mary & Paul Fink - In memory of Arlene Davidowitz



**DONATE TO B'NAI ISRAEL
AT NO COST TO YOU
AND CLEAN OUT YOUR CLOSETS FOR SPRING!**

MARCH

SPRING *cleaning*

The Temple Fundraising Committee has made arrangements to sponsor a drive to collect gently used clothing and household items to be sold "by the pound" by B'nai Israel for cash.

If you haven't already begun, please start your spring cleaning now! Set aside your "surplus" and no longer used items to be dropped off at the Temple in plastic garbage bags and boxes. Clean items in sellable condition that you might otherwise give away, throw away or move to the back of the closet can be donated, recycled, and resold to earn money for the Temple at no cost to you.

Items for collection can include all types of clothing, accessories and soft goods such as bedding, tablecloths and pillows packed in plastic bags. Small items from the kitchen including dishes, silverware, hand-held appliances, knick-knacks, toys, games and electronics must be packed in cardboard boxes. Hard cover and paperback books, CD's and DVD's are welcome packed separately in boxes as well.

**Watch for additional details in the weekly email
and March bulletin for the drop off dates and times.**

We are required to deliver the collected merchandise to the Savers Store in Holbrook (Specific date to be announced). **If you have access to a truck or other large vehicle** and are willing to help us with transportation, please email fundraising@bnai-israel.org to volunteer.

No suitable vehicle but a strong back? Please offer to help load/unload at fundraising@bnai-israel.org.

February 2025

Sunday	Monday	Tuesday	Wednesday	Thursday	Friday	Saturday
26	27	28	29	30	Jan 31	1 9:30am School grades 3-6 10am Torah Study 11am Adult Education
2	3 6:30pm School Grades 7 & 8 7pm School Grade High School	4 7pm Sisterhood Board Meeting	5	6 10:30am Chair Yoga 1pm Leisurely Singles Group 7:30pm Fundraising Committee (Zoom)	7 8pm Shabbat Service	8 9:30am School grades 3-6 9:30am School Grades PreK-2 10am Torah Study 11am Adult Education
9	10 Bulletin Deadline 6:30pm School Grades 7 & 9	11 7pm Membership Committee	12	13 10:30am Chair Yoga	14 7:15pm Family & Tu Bishevat Service & Scout Shabbat	15 9:30am School grades 3-6
16	17 No School 7:30pm Finance Committee	18 7pm Sisterhood Wine & Cheese Movie Night	19	20 10:30am Chair Yoga 7:30pm Temple Board Meeting	21 7pm Kid-ish Shabbat 8pm Shabbat Service	22 No School
23 6:30pm School Grades 7 & 8	24	25	26	27 10:30am Chair Yoga	28 8pm Shabbat Service	Mar 1
2	3	Notes				

March 2025

Sunday	Monday	Tuesday	Wednesday	Thursday	Friday	Saturday
23	24	25	26	27	Feb 28	1 Family Fun Night: Bingo Night 9:30am School grades 3-6 9:30am School Grades PreK-2 10am Torah Study 11am Adult Education
2	3 6:30pm School Grades 7 & 9 7pm School Grade High School	4 7pm Sisterhood Board Meeting	5	6 10:30am Chair Yoga 7:30pm Fundraising Committee (Zoom)	7 8pm Shabbat Service	8 9:30am School grades 3-6 10am Morning Service with Bat Mitzvah of Darby Gingold 6pm Purim Masquerade
9	10 Bulletin Deadline 6:30pm School Grades 7 & 8	11 7pm Membership Committee	12	13 10:30am Chair Yoga	14 7:15pm Family & Purim Service & Religious School Shabbat	15 9:30am School grades 3-6 9:30am School Grades PreK-2 12pm Purim Carnival
16 1pm Leisurely Singles Group Book Discussion	17 6:30pm School Grades 7 & 9 7:30pm Finance Committee	18	19	20 10:30am Chair Yoga 7:30pm Temple Board Meeting	21 7pm Kid-ish Shabbat 8pm Shabbat Service	22 9:30am School grades 3-6
23	24 6:30pm School Grades 7 & 8	25 6pm Women's Seder	26	27 10:30am Chair Yoga	28 8pm Shabbat Service	29 9:30am School grades 3-6 9:30am School Grades PreK-2 with Seder 10am Morning Service with Bar Mitzvah of Dawson Sciacca
30 10am Spring Planting Celebration	31 6:30pm School Grades 7 & 9	Notes				

TURN YOUR MAZEL TOU INTO A MITZVAH

SPONSOR AN ONEG



Oneg means "joy" and the Oneg Shabbat is the nosh congregants and guests share after a Friday night service. This is a time when we meet newcomers, share a laugh with old friends, and connect with each other in the spirit of Shabbat.

You can sponsor an Oneg in remembrance of a loved one on their yahrzeit, in honor of a milestone, the birth of a child, an anniversary, a birthday, an engagement, or any other Simcha, "happy occasion." It is a wonderful way to celebrate being part of the Temple B'nai Israel community.

Contact Karen in the office at (631) 563-1660 for details and more information.

Condolences

The B'nai Israel Reform Temple extends its deepest condolences to the Holts & Penn families on the loss of Elyse & Helene's mother, Arlene Davidowitz. May they find comfort in the blessings of good memories that will always be theirs.

Yahrzeits

February 7th

*Joseph Beer
*Lois Berger
George Berman
*Frank Brand
*Celia Burrows
*David Burrows
*James Burrows
*Eveline Carchman
*Nicholas Carulli
*Jennie Chapoff
*Dennis Dolling
*Jim Eaton
Lloyd Feuer
*Frank Francese
Mark Freiman
*Albert Freistadt
*Loyce Friedman
*Samuel Hertzberg
*Anna Holmes
*Vivian Kirson
*Lillian Kranker
*Paul Lebensfeld
*Leon Leiboff
Josephine Lyons
*Morris Madow
*Sandra Mandel
*Bertha Markofsky
*Yetti Miller
*Sarah Mirrer
*Beatrice Moyses
Selma Pettick
*Carole Porwick
*Murray Porwick
Dr. David Rabinovici
*David Raynes
*Louis Reisch
*Minnie Rosenfeld
*Murray Rubenstein
*Leon Seldin
*Caroline Shmagin
*Miriam Shorr
*William Silver
Sheldon Simon
*Annette Singer
*Donald H. Singer
Anne Tabak
*Moshe Vianu
*Ruth Wahlberg

February 14th

*Ionel Alscheck
*Sophie Berger
*Bernard Blum
*Martha Brass
Ruth Cohen
*Rafael Dana
*Elliott Eckhaus
*Edward Epstein
*Henry Erdrich
Joseph Forman
*Sally Geller
*Bess Glasser
*Estelle Goldstein
*Sache Greenberg
Melvin Hart
*Gertrude Hertzberg
Jack Isaacs
Allen Klein
Aaron Krasner
*Ruth Lack
*Jerome Leibowitz
Samuel Lindner
*Laura Marsh
*Charlotte Morganstern
*Joseph Nebreda
*Sadie Romanick
*Sylvia Roth
*Sylvia Schrank & Family
*Mary Schreiber
*Rosalind Sloane
Martin Tuck
*Charles Wasserman
*Irving Weiss
George Westwater
Ruby Wilber

February 21st

*Irwin Altman
*Max Atkins
*Marilyn Avergun
*Estelle Bassell
*Isidor Batter
*Jennie Berman
Lee Bialer
*David Bornstein
*Dora Cohen
*Irving Cohen
*Mortimer Cohen
Bessie Darmstadt
Carolynn Eskenazi
Joel Feigenson
*Max Fein
*Benjamin Feinstein
*Miriam Frank
*Stephanie Goodman
*Irene Gray
*Seymour Gray
Wallace Heckman
Robert Kissinger
*Alfred Klein
*Henry Labiak
*Mollie Lazen
*Harry Lewis
Ronnie Lowenberg
*Joseph Mankovitz
*Arnold "Marty" Neckameyer
Rachel Nooger-Ellis
*Irving Pallik
*Murray Reich
*Milton Rifkin
Susan Ringle
Sylvia Rosolinsky
Raymond Schleicher
*Magdalene Serafini
*Sidney Sonkin
*Murray Spindel
Gerald Stone
Estelle Teitelbaum
*Deborah Turchen
*Max Wetzler
Irving L. Woolf
*Sarah Zusman

February 28th

*Rebecca Alcabes
Yitzak Armoza
*Irving Arnowitz
*Jennifer Bassell
*Laura Brass
*Melvin Brass
*Harriet Byan
*Ursula Cahn
Benjamin Feinberg
*Murray Fishman
*Roslyn Flum
*David Gold
*Roslyn Hobish
*Bertha Jacobs
*Marcus Kalt
*Abraham Kaufman
Harriet Kaye
*Nathan Kirchheimer
*Robert Klopert
Irving Kovalsky
*Harry Lehrbaum
*Gerry Leibowitz
*Irving Levine
*Judith Lite
*Florence Luckow
Glenn Moss
*Stuart Norman
*Carl Olinsky
*Nathan Rakieten
Shirley Rauchman
*Jack Rosenstein
*Jennie Schuchman
*Morris Sirlin
Milton Somberg
*Mildred Stone
*Herman Strully
*George Stulzaft
Sarah Valles
Marvin Warmbrand
*Samuel Wasserman
Marvin Weiss
Seymour Wenowsky
*Raymond Alfred Williamson
*Adelaide Wohl
*Joseph Zawatsky

Please Contact Us

Please contact us when someone is sick or if there is a death in the family so that the Temple can extend its assistance. Before making any funeral arrangements, please call.

See Temple Directory (next page) for phone numbers.

Temple Directory

67 Oakdale Bohemia Road, Oakdale, NY 11769 (631) 563-1660 www.bnai-israel.org
Temple Office, Karen Smollins office@bnai-israel.org

Clergy

Rabbi Jessica Rosenthal (928) 925-3279 rabbi@bnai-israel.org
Cantor Ilana Plutzer cantor@bnai-israel.org
Rabbi Emeritus Dr. Steven Moss rabbiemeritus@bnai-israel.org

Board of Trustees

President, Seth Berman (516) 924-0179 president@bnai-israel.org
Past President, Paul Fink
Executive Vice President, Debby Lyons
VP Buildings & Grounds, Jay Tuller bandg@bnai-israel.org
VP Fundraising, Sandy Weber fundraising@bnai-israel.org
VP Administration, Fran Leiboff
Treasurer, Mike Lambert treasurer@bnai-israel.org
Financial Secretary, Joel Silverman financial@bnai-israel.org
Recording Secretary, Mark Wittenberg
Trustees: Allison Rothstein, Arthur Diamond, Barbie Saslau, Deborah Lazen, Ellen Spergel, Barbara Abrams, Joi Garvin, Suzanne Wittenberg, Paul Weber, Rich Motlin, Natalie Berhumoglu, Stephanie Plewka, Thea Gunther, Jack Goodman, and Sarah Van Keuren (Alternate Trustee).
Representatives: Brotherhood: Gil Sacks, Sisterhood: Trish Lindner, School: Paige Sacks
Legal Representative: Steven Taitz

Religious School

Chairperson, Alice Lambert (631) 589-1375
Religious School Office (631) 563-1663 school@bnai-israel.org
Bar/Bat Mitzvah Scheduling, Fran Baker (631) 567-1537

Committees, Groups, and Individuals to know

Custodian, Charlene Minier
Sisterhood President, Joi Garvin sisterhood@bnai-israel.org
Brotherhood President, Gil Sacks brotherhood@bnai-israel.org
Membership, Fran Leiboff membership@bnai-israel.org
Ritual Committee, ritual@bnai-israel.org
Donations Committee donations@bnai-israel.org
Landscaping Lesli Vohwinkel (305) 927-7847 lvohwinkel@gmail.com
Outreach, Alice Lambert (631) 589-1375 amlambert430@gmail.com
Communications, Jeannette Berman (631) 775-6147 webmaster@bnai-israel.org
Choir Director, Scott Lyons
Kitchen Committee, Rich Motlin

Temple Caterers

B'nai Israel is limited to these caterers for any celebration in the Temple Social Hall. Please see the Kitchen Committee with any questions or requests.

Lessing's Caterers (631) 277-7800 or (631) 581-0022
Mitzvah Caterers of Plainview (516) 938-1310 or (516) 351-0661
Woodbury Kosher (516) 681-7766
Zan's Kosher Caterers (631) 979-8770
Miller Place Bagel & Deli (631) 331-4576
Pastrami & Friends (631) 499-9537

The
Bristol.
ASSISTED LIVING

HOLTSVILLE

5535 Expressway Drive North
(631) 732.2300 | thebristol.com



BE YOUR OWN GUEST

WAITERS/WAITRESSES
BARTENDERS/GRILL PEOPLE

(631) 745-1180 or (631) 580-4432

YOU BE THE GUEST, WE'LL DO THE REST!!!

FREE ESTIMATES

(516) 222-2007

You Can Have A Beautiful Lawn...Guaranteed!

Lawn Care Programs
Fertilizer
Weed Control
Insect Control



Aeration & Seed
Tree/Shrub Fertilization
Mosquito Flea & Tick
Organic Options Available

Lawn Man

Serving: Oakdale-Sayville-Holbrook-West Islip

ejthedj
Inc.

a division of national event connection

Edward Jacobs
President

701-6 Koehler Avenue
Ronkonkoma, NY 11779
631.348.7848 x15
631.348.7831 Fax

ejacobs@ejthedj.com
www.ejthedj.com

HKSB  **Helen Keller**
SERVICES FOR THE BLIND

Robin Levine-Dinerstein MS, CVRT


rdinerstein@helenkeller.org
Office tel 631 542-8003
Office fax 631 424-0301
Cell 516 368-6839

3385 Veterans Memorial Highway
Suite A
Ronkonkoma, NY 11779
www.helenkeller.org

ABSOLUTE
ENTERTAINMENT

- LIGHTING AND VISUAL EFFECTS
- DJ ENTERTAINMENT
- PHOTOBOOTHS
- MUSICIANS

 320 West Main Street
Sayville, NY 11782
 info@absolutedjs.com

 1.800.TOP.HITS
(631.286.8117)
 absolutedjs.com

TAYLOR RENTAL

410 Motor Parkway,
Hauppauge, NY 11788
631-435-1101

VIDEO GUYS

*Photographing & Filming
Events for Over 20 Years*

Great Prices ~ Call Now

GUY EDWARDS

**Photographer
Videographer**

*Any And All Occasions
Captured Forever*

www.photovideoguys.com
631-563-7695



Computers



Computers

Software consultation, Small office network setup
MS Access Programming, MS Office Training
Virus and Spyware removal

Jeff Richer Consultant 631-835-9615
(MBA, IT Professional)

NYsoftwareConsultant@gmail.com



MITZVAH CATERERS

AT THE NORTH SHORE JEWISH CENTER

YOUR PLACE OR OURS

*WEDDINGS, BAR/BAT MITZVAHS, BRISIM, BABY
NAMINGS, KIDDUSHIM, SHIVA MEALS, ELEGANT
DINNERS, OFFICE, BBQS OR ANY EVENT
ASK FOR ANDREW OR IRWIN (516) 351-0661*

*"Mitzvah caterers will gladly donate a portion
of your bill back to your organization"*

STRICT ORTHODOX RABBINICAL SUPERVISION

MARK WITTENBERG R.A., P.C.
ARCHITECT

P: 631.673.0980 • C: 516.220.1759
MARK@MARKWITTENBERG.COM

239 LAUREL ROAD
EAST NORTHPORT NY 11731

LITTLE'S LANDSCAPING
Russ: 631-256-6783

*Commercial and Residential
Landscaping Design & Maintenance
Snow Plowing
Licensed and Insured*

•STERLING BUSINESS SYSTEMS•

Canon

AUTHORIZED DEALER

(631) 750-6162

Serving LI & NYC for Over 30 Years

496 East Main Street, Patchogue, NY 11772

Suzanne Wittenberg
Real Estate Salesperson

swittenberg@coachrealtors.com
homewithsuzanne.com
c: 631.889.1949
o: 631.757.7272

coachrealtors.com



Coach Realtors

35 Laurel Rd

East Northport, NY 11731



NEW DAY THERAPEUTIC COUNSELING

EDWARD D. SMITH, LCSW

CALL FOR A 15 MINUTE FREE INITIAL CONSULTATION

22 RAILROAD AVE. SAYVILLE, NY 11782

368 VETERANS MEMORIAL HWY. COMMACK, NY 11725

SVL - UPSTAIRS 1ST ON L / COM - SUITE I 516-788-8018



- Bat Mitzvah • Mother of the
- Prom Bride/Groom
- Sweet 16 • Guest/Evening

Located: 4838 Sunrise Hwy, Sayville

Phone: (631) 567-6650

@EvaofSayville



I.J. MORRIS, INC.

Jewish Funeral Directors Since 1888

21 E. Deer Park Road, Dix Hills (631) 499-6060

55 North Station Plaza, Great Neck (516) 487-8600

46 Greenwich Street, Hempstead (516) 486-2500

1895 Flatbush Ave., Brooklyn (718) 377-8610

114-03 Queens Blvd., Forest Hills (718) 263-5365

21 W. Broad Street Mt. Vernon (914) 664-2062

www.ijmorris.com

Preplan—call for information

Monuments by I.J. MORRIS, INC.

**SHALOM MEMORIAL
CHAPELS, INC.**

FUNERAL DIRECTORS

760 Smithtown ByPass, Smithtown, NY 11787

Tel: (631) 360-1600 Fax: (631) 630-7978

www.shalommemorialchapelsinc.com

YOUR AD HERE

Please contact the
Temple Office for details
(631) 563-1660

YOUR AD HERE

Please contact the
Temple Office for details
(631) 563-1660



B'nai Israel Reform Temple

67 Oakdale-Bohemia Road, Oakdale, NY 11769

(631) 563-1660